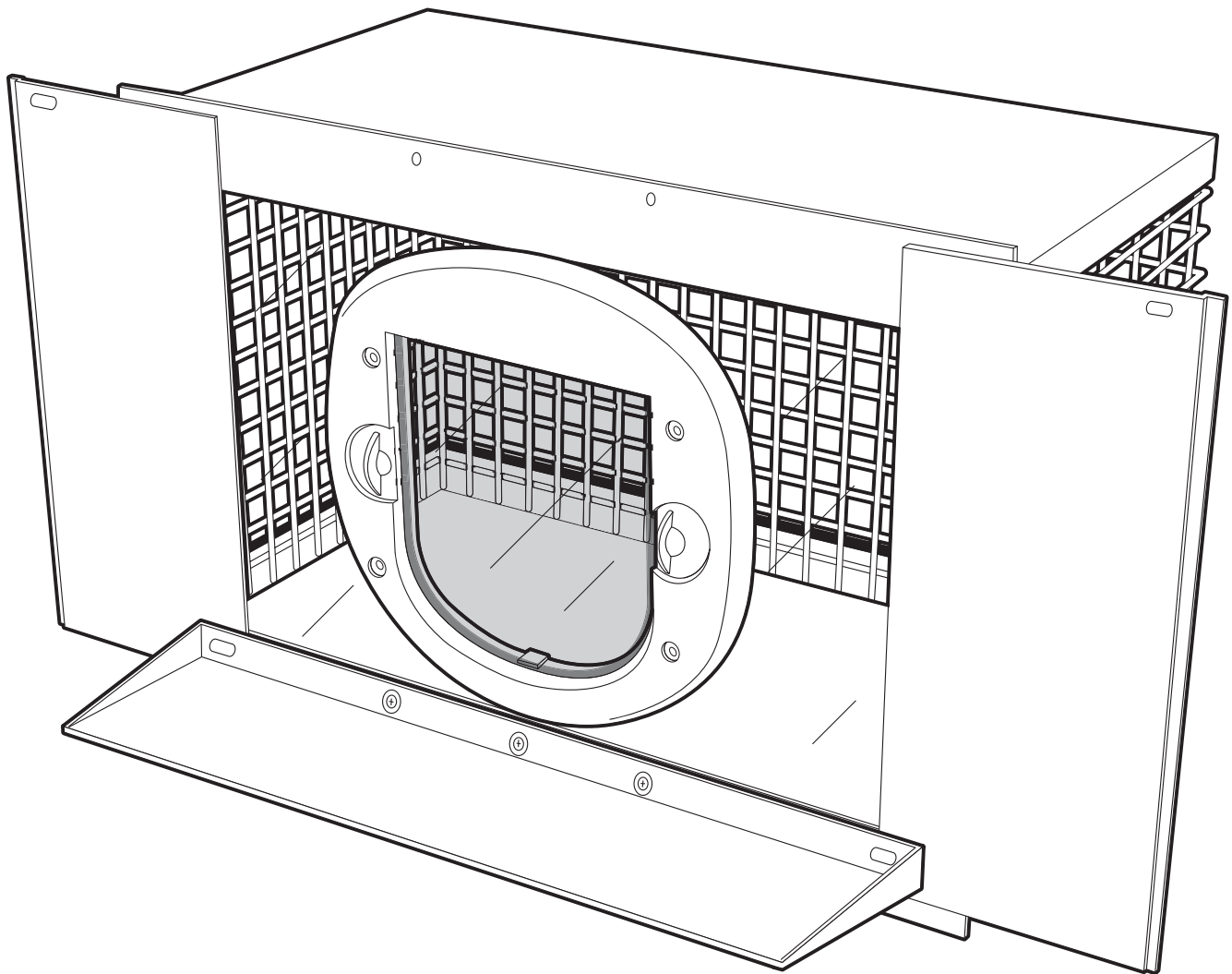


# PetSafe<sup>®</sup> Cat Veranda<sup>™</sup> Installation Guide

Please read this entire guide before beginning



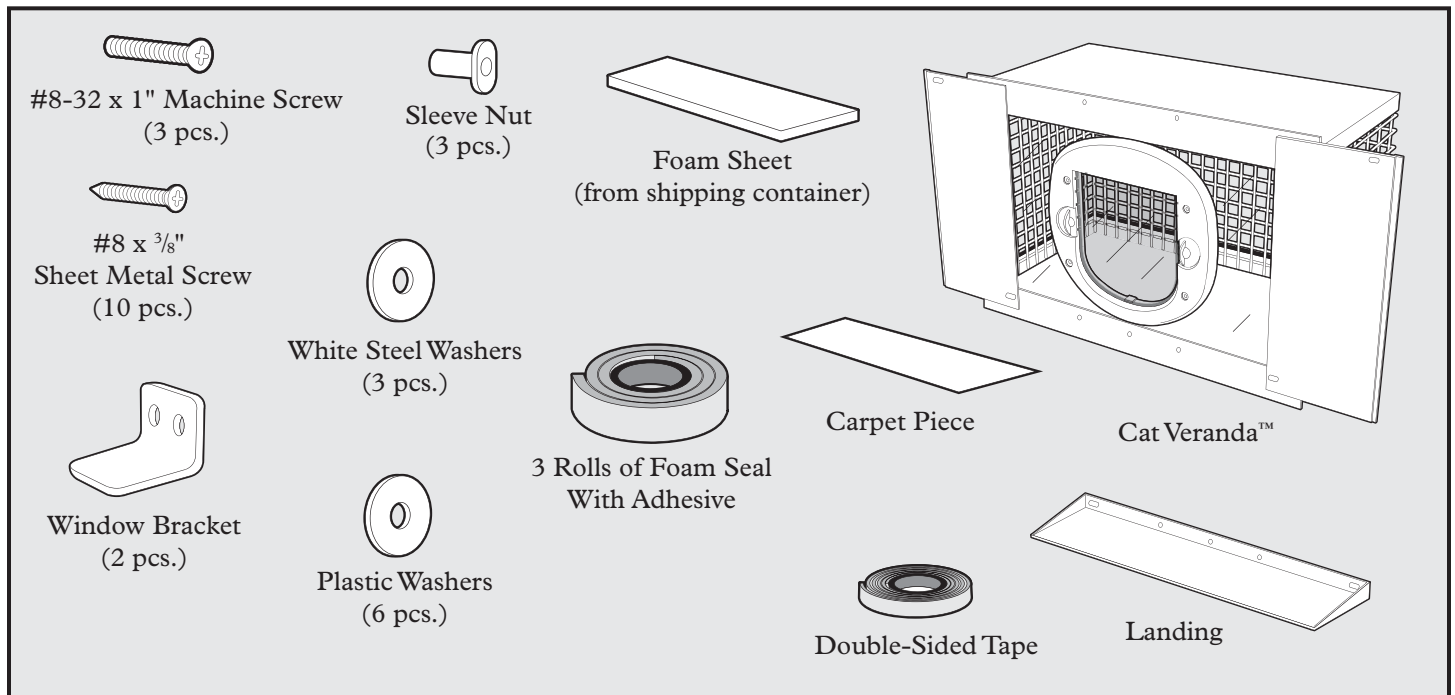
Thank you for choosing PetSafe®. Our mission is to be the most trusted brand in the pet ownership experience. We want to ensure your pet’s safety by providing you with the tools and techniques to successfully train your pet. If you have any questions, please contact the Customer Care Center at 1-800-732-2677 or visit our website at [www.petsafe.net](http://www.petsafe.net).

---

# Table of Contents

Components .....	3
Other Items You May Need.....	3
Prepare the Window Opening .....	4
Attach the Landing.....	4
Installing and Securing the Cat Veranda™ in the Window.....	5
Using the Cat Flap Locks .....	7
Training.....	7
Carpet Removal .....	7

# Components



## Other Items You May Need

- 1/4" Electric Drill
- 1/8" Drill Bit
- Safety Glasses
- Phillips Screwdriver
- Tape Measure
- Pencil

## Always Remember:

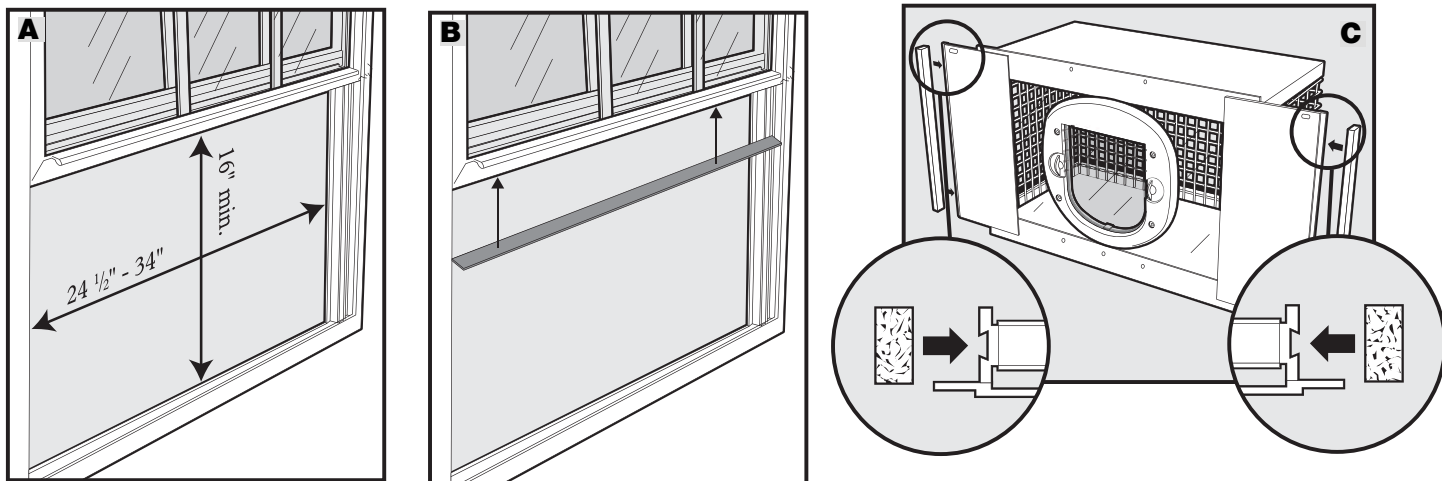
- Safety First

Installation of the Cat Veranda is a simple process for 1 or 2 people with moderate body strength and who are comfortable working with hand tools. If you do not have access to an electric drill and the appropriate hand tools listed above, or are not comfortable, or are not capable of working with such tools, you should hire a handyman to complete this installation.

**Important: Maximum cat weight is 20 lbs.**

# Prepare the Window Opening

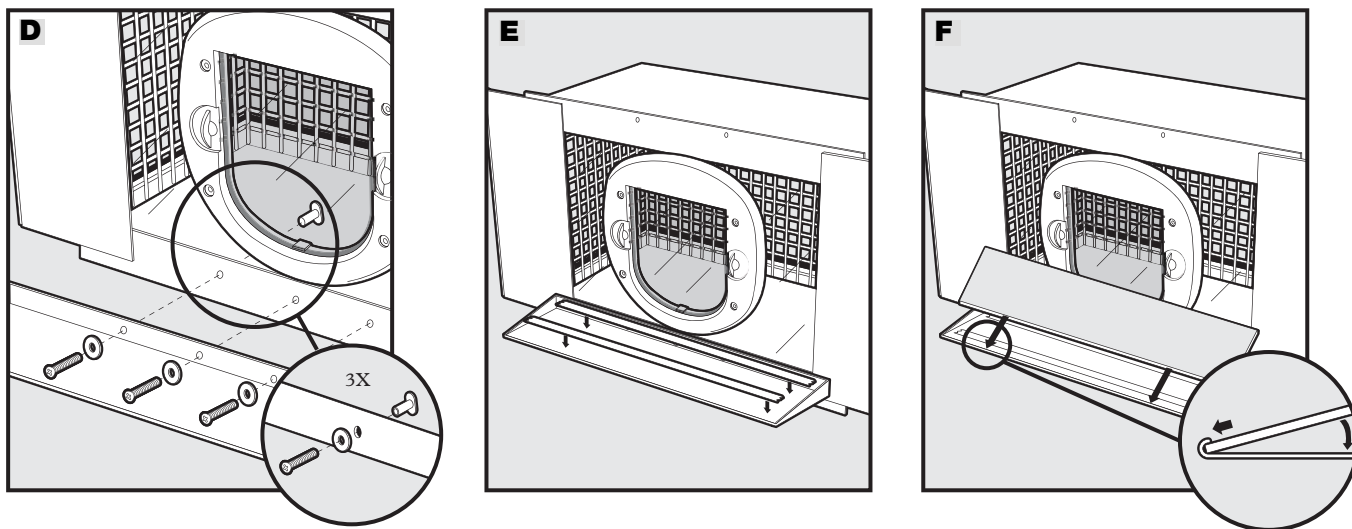
Verify the window you have chosen is the correct size for the Cat Veranda™. Unlock the window and raise the lower window all the way up against its upper stops. Prop the window in this position during the installation to prevent injury. Remove any screens or storm windows. Measure the opening to verify there is adequate clearance for the Cat Veranda (A). Cut and apply Adhesive Backed Foam Seal to bottom of sliding window (B) and edge of Sliding Panels (C).



# Attach the Landing

1. Reach through the Flap and install the 3 Sleeve Nuts through the pre drilled holes inside the enclosure (D).
2. Support the Landing with the Foam Sheet to help align the holes before installing the screws.
3. Position the Landing and install the screws using three #8-32 x 1" Machine Screws and 3 White Steel Washers (D).
4. Tighten the screws securely being careful not to over tighten them.
5. Apply two strips of Double-Sided Tape to the surface of the Landing (E).
6. Remove protective backing to expose adhesive.
7. Tuck edge of Carpet underneath rolled edge of Landing then press Carpet flat (F)
8. Press the Carpet to the tape adhesive. Carpet should be firmly attached to the Landing.

Unit is completely assembled and now ready for installation in the window.

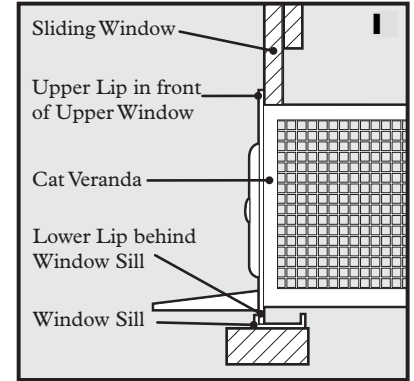
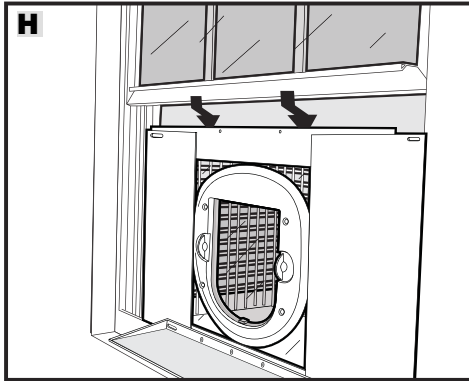
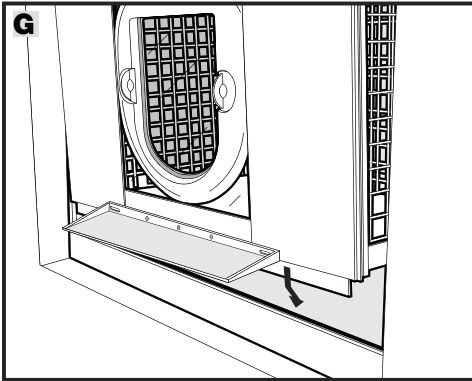


# Installing and Securing the Cat Veranda™ in the Window

**Important:** The Cat Veranda must be securely mounted to the window to prevent injury.

## Step 1: Position Cat Veranda in the Window

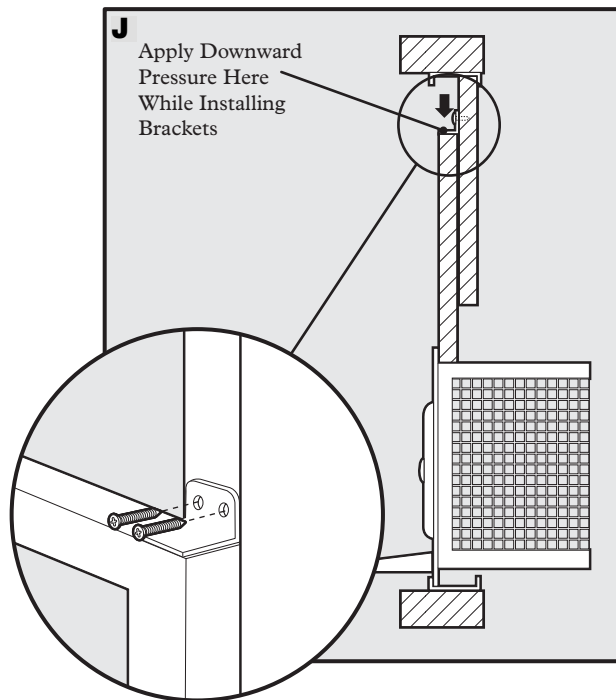
Set the Cat Veranda in the open window, centering it in the window opening. The lip on the lower edge of the Cat Veranda should rest just behind the window sill (**G**). Lower the upper window until it is setting firmly against the roof of the Cat Veranda (**H**). The lip on the upper edge of the Cat Veranda should rest against the inner surface of the lower window (**I**).



## Step 2: Installing Window Brackets

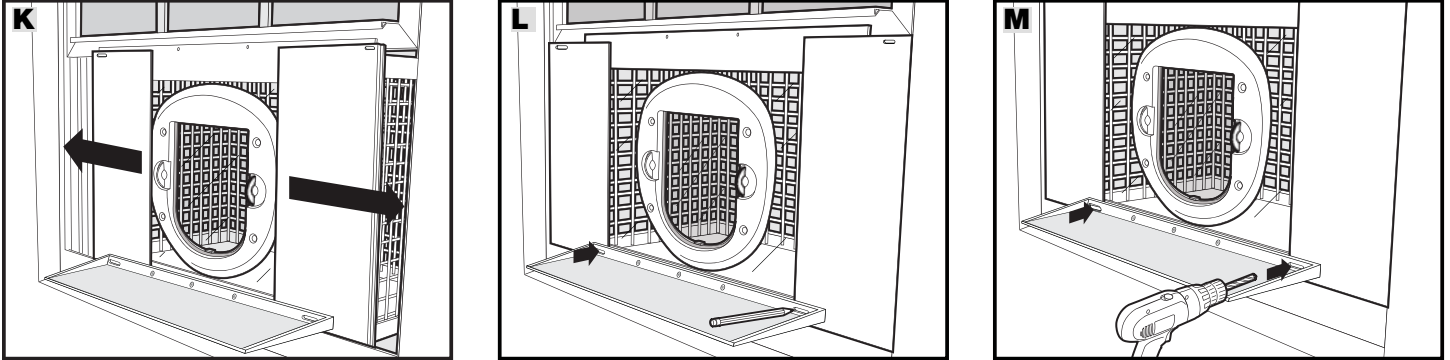
With the Cat Veranda positioned in the window, place one Window Bracket in either the right or left corner of the top surface of the sliding window (**J**). While pressing down on the sliding window to make certain it is seated against the Cat Veranda, mark through both holes of the Window Bracket on the upper window frame. Drill two  $\frac{1}{8}$ " diameter holes through one side of the upper window frame edge. **DO NOT DRILL INTO GLASS!** Using two #8 x  $\frac{3}{8}$ " Sheet Metal Screws mount the Window Bracket to the upper window.

While pressing down on the sliding window repeat the procedure for the remaining Window Bracket in the opposite corner of the sliding window.



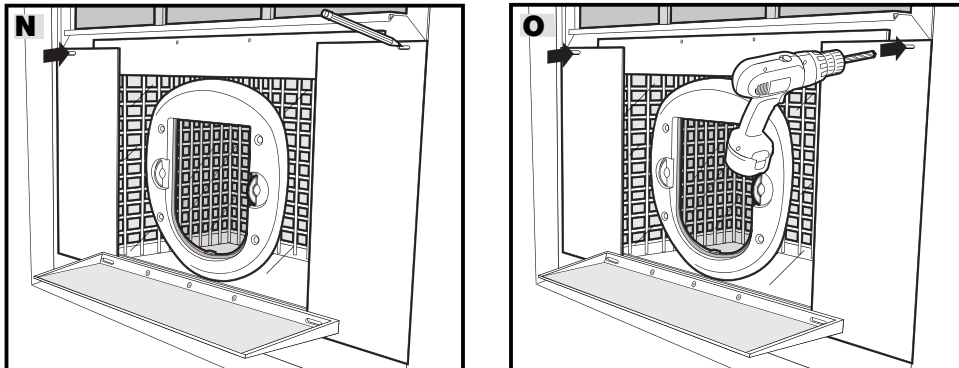
### Step 3: Positioning the Sliding Panels

1. Slide both Sliding Panels out to seal the window openings on the sides of the Cat Veranda™. When the Sliding Panels are adjusted correctly the foam weather strip on the panel ends should be compressed against the sides of the window frame (**K**).
2. Mark the hole location on one panel (**L**) and drill through both layers (approximately  $\frac{3}{16}$ " deep) with the  $\frac{1}{8}$ " diameter drill bit (**M**).
3. Insert a #8 x  $\frac{3}{8}$ " Sheet Metal Screw and Plastic Washer and tighten securely.
4. After adjusting the remaining Sliding Panel to a tight fit in the window, mark the hole, drill and install the #8 x  $\frac{3}{8}$ " Sheet Metal Screw and Plastic Washer and tighten securely. Be certain the Cat Veranda is seated securely in the window when drilling the holes.



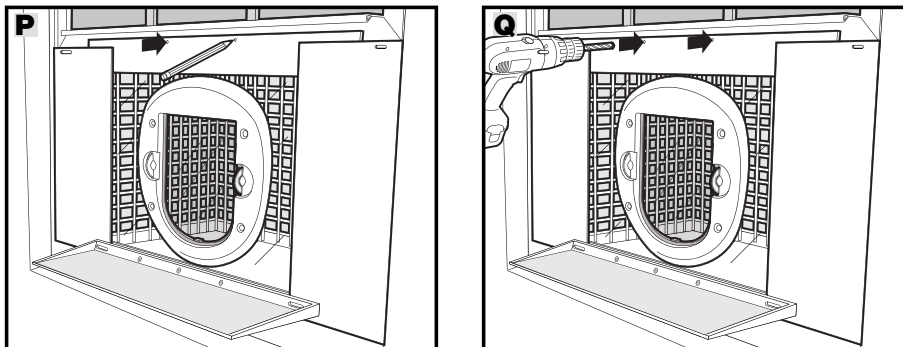
### Step 4: Securing the Sliding Panels

1. Locate the slots in the upper corner of the Sliding Panels.
2. Mark center of slot (**N**).
3. Drill  $\frac{1}{8}$ " diameter hole through slot in the Sliding Panel and window sash (**O**). **DO NOT DRILL INTO GLASS!**
4. Install a #8 x  $\frac{3}{8}$ " Sheet Metal Screw and Plastic Washer.
5. Tighten securely, do not over-tighten.
6. Repeat the procedure for slot on opposite side.



### Step 5: Securing the Cat Veranda to the Upper Window Sash

1. Locate the 2 holes in upper lip of Cat Veranda.
2. Mark center of holes (**P**).
3. Drill  $\frac{1}{8}$ " diameter hole through hole and window sash (**Q**). **DO NOT DRILL INTO GLASS!**
4. Install a #8 x  $\frac{3}{8}$ " Sheet Metal Screw and Plastic Washer.
5. Tighten securely, do not over-tighten.
6. Repeat the procedure for remaining hole.
7. Make sure the Cat Veranda is securely mounted in the window or injury may result.



### Step 6: Installing Foam Seal with Adhesive around the Cat Veranda™

1. Locate any area where Foam Seal with Adhesive is needed, measure and cut to fit.

*Note: On most windows it may be necessary to put Foam Seal with Adhesive across the top of the sliding window to seal the gap between the sliding window and glass.*

2. Remove protective backing and install as needed.

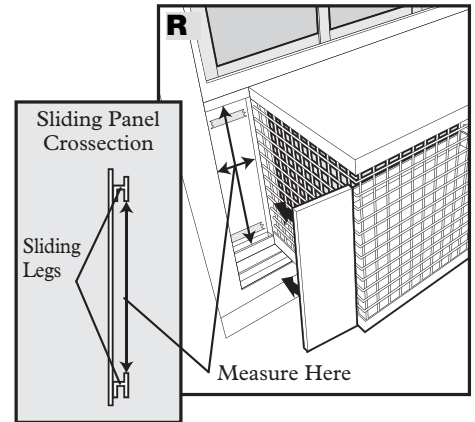
### Step 7: Optional Additional Rain Protection (Requires outside access)

1. Measure height between sliding legs and width between Cat Veranda and edge of window (R).

2. Select appropriate Foam Sheet from shipping container, measure and cut to fit.

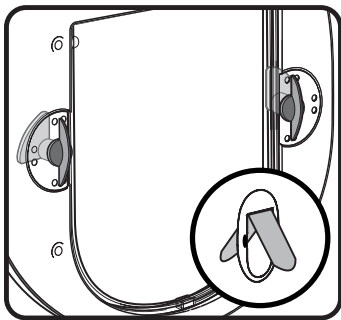
3. Apply Double-Sided tape to backside of Sliding Panels where foam piece will be installed. Remove protective backing and press Foam Sheet onto tape.

4. Repeat the procedure for opposite side of unit.

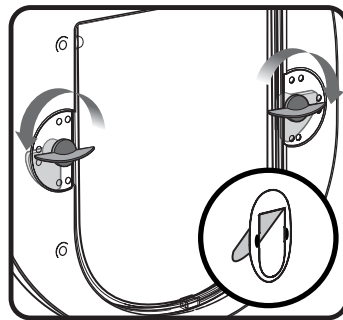


Installation of your Cat Veranda is complete and it is ready for use.

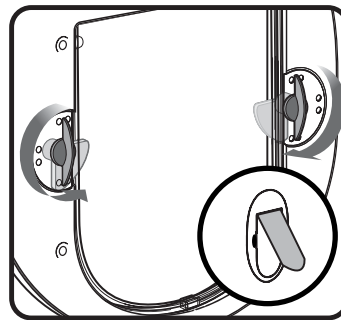
## Using the Cat Flap Locks



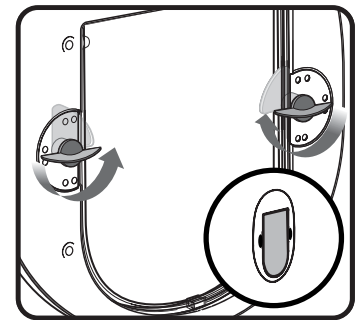
In and Out



Out Only



In Only



Locked

**Warning! Read Installation Guide before use. Make sure the 4-way lock is not set to prevent your cat from exiting the Cat Veranda.**

## Training

Bring your pet to the Cat Veranda. Temporarily tape the flap up and try to talk your pet into going through. Sometimes it helps for you to be on the other side (outside the house, if possible).

You may try persuading your pet through the door using a small piece of food or a treat. If your pet will not go through the door, do not force them through the door, simply wait for your pet to go through on his own.

## Carpet Removal

The carpet inside the Cat Veranda may be removed by reaching through the Flap, lifting one corner then rolling the carpet up so it will fit through the flap opening.

# Product Warranty

Please register your product online at [www.petsafe.net](http://www.petsafe.net). All parts are covered under warranty for the life of this product. Labor is covered for the first year of ownership. Thereafter, there is a minimum service charge for the repair or replacement of the product. Misuse, loss, damage by pet or improper use or handling is not covered. PetSafe® will not pay for loss of time, inconvenience, loss of use of your product or any incidental or consequential damage. Warranty void if product resold.

Please contact the Customer Care Center at 1-800-732-2677 if you need service or for help in troubleshooting and, if needed, to arrange a repair for your product. (A service charge may apply.) Also, please visit our website [www.petsafe.net](http://www.petsafe.net) for Frequently Asked Questions and Troubleshooting Tips.

Radio Systems Corporation  
10427 Electric Avenue  
Knoxville, TN 37932  
1-800-732-2677  
[www.petsafe.net](http://www.petsafe.net)  
400-825